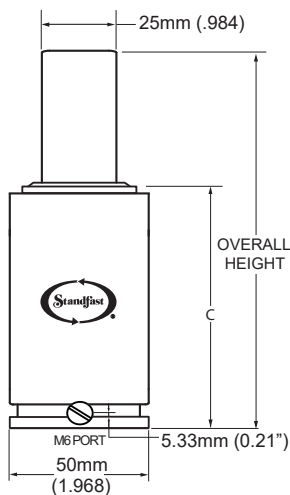


# U750 SERIES

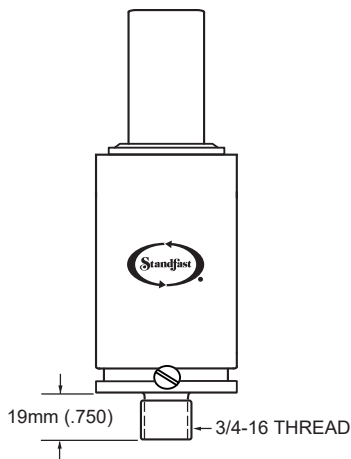
## U750 DROP-IN STYLE

Specify "STD" when ordering



## U750 STUD MOUNT STYLE

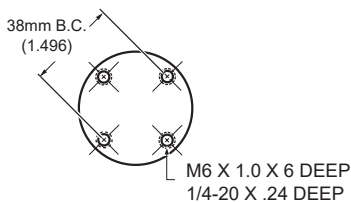
Specify "STUD" when ordering



## TAPPED BASE MOUNT STYLES

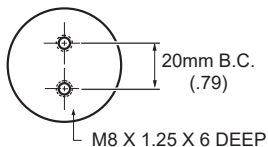
4 HOLE TAPPED BASE:

To order: Specify "TB" for English or "MTB" for Metric



2 HOLE TAPPED BASE

To order: Specify "MTB2"



The U750 is designed to be used where space limitations prevent the use of our CS750 or CH750, but the application requires the same initial contact pressure.

The U750 is available for hoses applications using our Micro-Line miniature hose assemblies and fittings using the M6 port, or with the standard Parker hose and fittings using a G-1/8 port. Please reference the hoses system tab in the 750 section for additional information on the G-1/8 port.

To adjust pressure on the U750 cylinder, please use a CAM6R Charging Adapter and a DTM6R Discharge Tool.

We recommend all cylinders be backed-up during operation.

## U750 STROKE CHART

STROKE LENGTH		MAX.ALLOW. STROKE		C		OVERALL LENGTH		WEIGHT
MM	INCHES	MM	INCHES	MM +/- .5	INS +/- .02	MM +/- .5	INS +/- .02	IN LBS.
12.5	0.492	9.5	0.374	63.5	2.492	78.0	3.062	2.06
25.0	0.984	22.0	0.866	76.0	2.984	103.0	4.046	2.36
37.5	1.476	34.5	1.358	88.5	3.476	128.0	5.030	2.66
50.0	1.969	47.0	1.850	101.0	3.969	153.0	6.015	2.96
62.5	2.461	59.5	2.343	113.5	4.461	178.0	6.999	3.27
75.0	2.953	72.0	2.835	126.0	4.953	203.0	7.983	3.57
80.0	3.149	77.0	3.031	130.8	5.150	213.0	8.377	3.72
87.5	3.445	84.5	3.327	138.5	5.445	228.0	8.967	3.88
100.0	3.937	97.0	3.819	151.0	5.937	253.0	9.952	4.18
112.5	4.429	109.5	4.311	163.0	6.429	278.0	10.936	4.33
125.0	4.921	122.0	4.803	176.0	6.921	303.0	11.921	4.48

Recommended tolerance on machined pocket in the die is 52.0/54.0 (2.047"/2.125") for maximum U750 performance.

## U750 FORCE CHART based on 2,000 psi/138 Bar

Initial contact pressure for the U750 is 1509 lbs.

STROKE		TRAVEL										
MM	INCHES	0.49	0.98	1.48	1.97	2.46	2.95	3.15	3.45	3.94	4.43	4.92
12.5	0.49	2031										
25.0	0.98	1796	2202									
37.5	1.48	1708	1956	2288								
50.0	1.97	1663	1840	2060	2340							
62.5	2.46	1634	1772	1936	2133	2374						
75.0	2.95	1615	1728	1858	2009	2187	2399					
80.0	3.15	1609	1715	1834	1972	2133	2321	2407				
87.5	3.45	1602	1697	1805	1927	2066	2228	2300	2417			
100.0	3.94	1591	1674	1765	1868	1983	2113	2170	2261	2431		
112.5	4.43	1583	1656	1736	1824	1921	2029	2076	2151	2287	2443	
125.0	4.92	1576	1642	1712	1789	1874	1967	2006	2069	2183	2310	2452

Formula to calculate charge pressure for lower initial contact pressure is: FORCE REQUIRED x 1.325 (ex. 1250 x 1.325 = 1656 psi charge in cylinder).

PLEASE NOTE: A max. charge pressure of 2175 PSI/150 Bar is available upon request. Initial contact force at 2175 PSI/150 Bar will be 1655 lbs (736 daN).

SELF-CONTAINED ORDERING CODE: U750 x STROKE LENGTH—MOUNT STYLE—CHARGE PRESSURE

HOSED SYSTEM ORDERING CODE: UP750 x STROKE LENGTH—TB—UNCHARGED