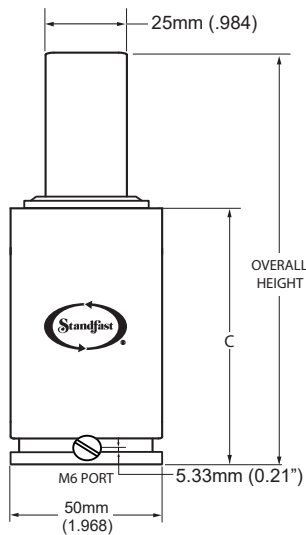


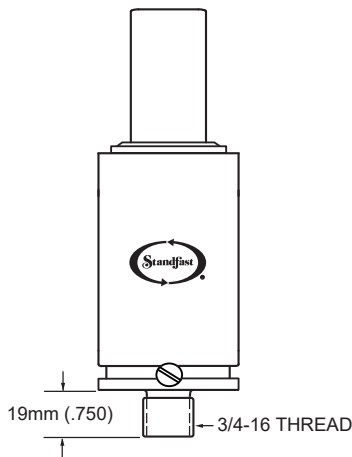
## CS750 DROP-IN STYLE

Specify "STD" when ordering



## CS750 STUD MOUNT STYLE

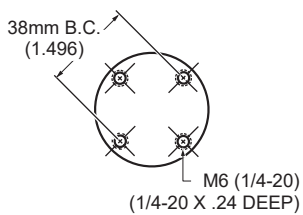
Specify "STUD" when ordering



## CS750 TAPPED BASE MOUNT STYLES

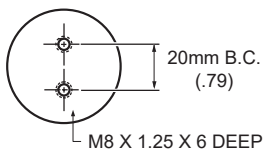
### 4 HOLE TAPPED BASE

To order: Specify "TB" for English or "MTB" for Metric



### 2 HOLE TAPPED BASE

To order: Specify "MTB2"



The CS750 is available for hoses applications using our Micro-Line miniature hose assemblies and fittings using the M6 port, or with the standard Parker hose and fittings using a G-1/8 port. Please reference the hoses system tab in the 750 section for additional information on the G-1/8 port.

To adjust pressure on the CS750 cylinder, please use a CAM6R Charging Adapter and a DTM6R Discharge Tool.

We recommend all cylinders be backed-up during operation.

## CS750 STROKE CHART

STROKE LENGTH		MAX.ALLOW. STROKE		C		OVERALL LENGTH		WEIGHT
MM	INCHES	MM	INCHES	MM +/- .5	INS +/- .02	MM +/- .5	INS +/- .02	IN LBS.
12.5	0.492	9.5	0.374	80.0	3.154	94.0	3.707	2.36
25.0	0.984	22.0	0.866	92.5	3.646	119.0	4.692	2.66
37.5	1.476	34.5	1.358	105.0	4.138	144.0	5.676	2.96
50.0	1.969	47.0	1.850	117.5	4.631	169.0	6.660	3.27
62.5	2.461	59.5	2.343	130.0	5.123	194.0	7.644	3.57
75.0	2.953	72.0	2.835	142.5	5.615	219.0	8.629	3.88
80.0	3.149	77.0	3.031	147.5	5.812	229.0	9.022	4.56
87.5	3.445	84.5	3.327	155.0	6.107	244.0	9.613	4.18
100.0	3.937	97.0	3.819	167.5	6.599	269.0	10.597	4.48
112.5	4.429	109.5	4.311	180.0	7.091	294.0	11.581	4.63
125.0	4.921	122.0	4.803	192.5	7.583	319.0	12.566	4.78

Recommended Tolerance on Machined Pocket in the die is 52.0/54.0 (2.047"/2.125") for maximum CS750 performance.

## CS750 FORCE CHART based on 2,000 psi/138 Bar

Initial contact force for the CS750 is 1509 lbs..

STROKE		TRAVEL											
MM	INCHES	12.5	25.0	37.5	50.0	62.5	75.0	80.0	87.5	100.0	112.5	125.0	
12.5	0.49	1976											
25.0	0.98	1779	2152										
37.5	1.48	1700	1935	2245									
50.0	1.97	1658	1828	2038	2303								
62.5	2.46	1631	1765	1923	2112	2342							
75.0	2.95	1613	1723	1849	1995	2167	2370						
80.0	3.15	1607	1710	1827	1961	2116	2297	2379					
87.5	3.45	1600	1693	1798	1917	2053	2209	2278	2391				
100.0	3.94	1590	1671	1761	1861	1973	2099	2155	2243	2408			
112.5	4.43	1582	1654	1732	1818	1914	2020	2065	2138	2271	2421		
125.0	4.92	1576	1640	1709	1785	1868	1959	1998	2059	2170	2294	2432	

Formula to calculate charge pressure for lower initial contact pressure is: FORCE REQUIRED x 1.325 (ex. 1250 x 1.325 = 1656 psi charge in cylinder).

PLEASE NOTE: A max. charge pressure of 2175 PSI/150 Bar is available upon request. Initial contact force at 2175 PSI/150 Bar will be 1655 lbs (736 daN).

SELF-CONTAINED ORDERING CODE: CS750 X STROKE LENGTH—MOUNT STYLE—CHARGE PRESSURE

HOSED SYSTEM ORDERING CODE: CSP750 X STROKE LENGTH—TB—UNCHARGED