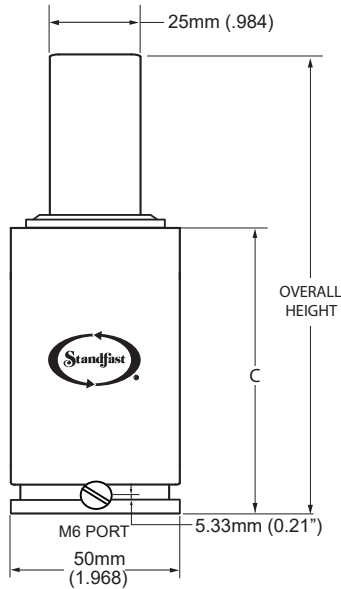


M750 SERIES

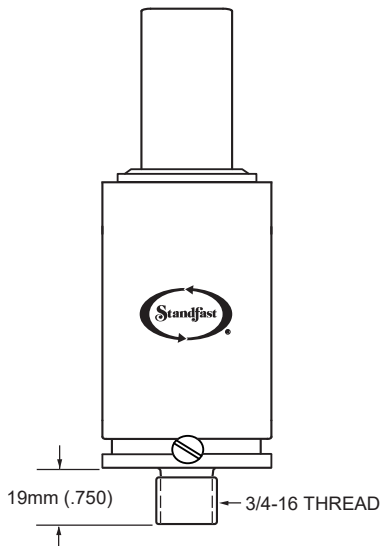
M750 DROP-IN STYLE

Specify "STD" when ordering



M750 STUD MOUNT STYLE

Specify "STUD" when ordering



Our M750 is now the most compact 750 series cylinder offered by Standfast Industries. The M750 is designed to be used in applications where space is extremely limited, but the force of a 750 series cylinder is required.

Our M750 is available for hoses applications using our Micro-Line miniature hose assemblies and fittings using the M6 port, or with the standard Parker hose and fittings using a G-1/8 port. Please reference the hoses system tab in the 750 section for additional information on the G-1/8 port.

To adjust pressure on the M750 cylinder, please use a CAM6R Charging Adapter and a DTM6R Discharge Tool.

We recommend that all cylinders be backed-up during operation.

M750 STROKE CHART

STROKE LENGTH		MAX.ALLOW. STROKE		C		OVERALL LENGTH		WEIGHT
MM	INCHES	MM	INCHES	MM +/- .5	INS +/- .02	MM +/- .5	INS +/- .02	IN LBS.
* 13.0	0.492	9.5	0.374	50.5	1.988	63.0	2.480	1.76
* 19.0	0.740	16.0	0.630	56.8	2.236	75.6	2.976	1.82
25.0	0.984	22.0	0.866	63.0	2.480	88.0	3.465	1.97
* 32.0	1.240	29.0	1.142	69.5	2.736	101.0	3.976	2.05
* 38.0	1.476	34.5	1.358	75.5	2.972	113.0	4.449	2.15
50.0	1.969	47.0	1.850	88.0	3.465	138.0	5.433	2.31
* 63.0	2.461	59.5	2.343	100.5	3.957	163.0	6.417	2.56
75.0	2.953	72.0	2.835	113.0	4.449	188.0	7.402	2.85
80.0	3.150	77.0	3.031	118.0	4.646	198.0	7.795	2.95
100.0	3.937	97.0	3.819	138.0	5.433	238.0	9.370	3.45
125.0	4.921	122.0	4.803	163.0	6.417	288.0	11.339	3.95

Recommended tolerance on machined pocket in the die is 52.0/54.0 (2.047"/2.125") for maximum M750 performance.

* Please note: Millimeter value for these stroke lengths is rounded. Inch value indicates actual stroke length.

M750 FORCE CHART based on 2,000 psi/138 Bar

Initial contact force for the M750 is 1509 lbs.

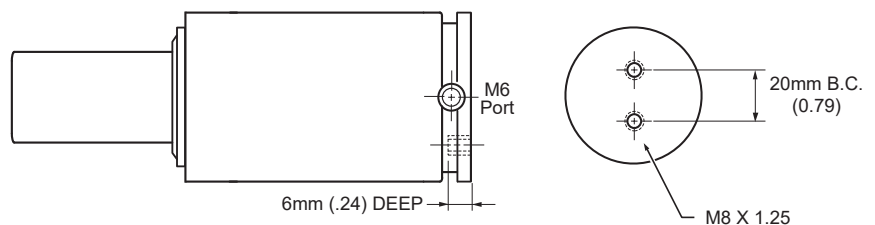
E-1

STROKE		TRAVEL										
MM	INCHES	13.0	19.0	25.0	32.0	38.0	50.0	63.0	75.0	80.0	100.0	125.0
13.0	0.51	2085										
19.0	0.75	1915	2179									
25.0	0.98	1823	2010	2241								
32.0	1.26	1758	1897	2061	2291							
38.0	1.50	1721	1835	1965	2143	2322						
50.0	1.97	1673	1756	1848	1969	2086	2367					
63.0	2.48	1641	1705	1775	1865	1949	2141	2398				
75.0	2.95	1621	1675	1732	1803	1870	2018	2209	2419			
80.0	3.15	1615	1665	1718	1784	1845	1980	2152	2338	2426		
100.0	3.94	1595	1634	1676	1727	1773	1873	1994	2122	2180	2448	
125.0	4.92	1580	1611	1643	1682	1717	1792	1881	1972	2012	2191	2466

Formula to calculate charge pressure for lower initial contact pressure is: FORCE REQUIRED x 1.325 (ex. 1250 x 1.325 = 1656 psi charge in cylinder). PLEASE NOTE: A max. charge pressure of 2175 PSI/150 Bar is available upon request. Initial contact force at 2175 PSI/150 Bar will be 1655 lbs (736 daN).

M750 TAPPED BASE STYLE

Specify "TB" when ordering.



SELF-CONTAINED ORDERING CODE: M750 X STROKE LENGTH—MOUNT STYLE—CHARGE PRESSURE
HOSED SYSTEM ORDERING CODE: MP750 X STROKE LENGTH—TB—UNCHARGED