

HP2400 SERIES

HP2400 FORCE CHART based on 2,000 psi
Initial contact pressure for the HP2400 is 4920 lbs.

		16.0	19.0	25.0	32.0	38.0	50.0	63.0	75.0	80.0	100.0	125.0
MM	INCHES	0.63	0.75	0.98	1.26	1.50	1.97	2.48	2.95	3.15	3.94	4.92
16.0	0.63	6850										
19.0	0.75	6547	6980									
25.0	0.98	6159	6463	7173								
32.0	1.26	5889	6114	6621	7330							
38.0	1.50	5737	5920	6326	6876	7429						
50.0	1.97	5541	5675	5964	6340	6702	7567					
63.0	2.48	5414	5517	5736	6015	6277	6875	7667				
75.0	2.95	5335	5420	5600	5824	6032	6495	7084	7731			
80.0	3.15	5309	5389	5555	5763	5954	6377	6908	7484	7753		
100.0	3.94	5232	5294	5424	5584	5728	6041	6421	6817	6997	7821	
125.0	4.92	5170	5219	5321	5444	5555	5791	6069	6351	6477	7033	7878

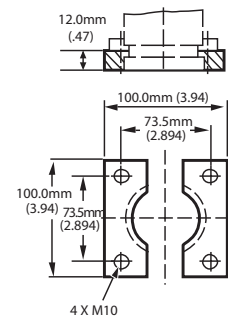
Formula to calculate charge pressure for lower initial contact pressure is: FORCE REQUIRED X .406 (ex. 3500 x .406 = 1421 psi charge in cylinder).
PLEASE NOTE: A max. charge pressure of 2175 PSI/150 Bar is available upon request. Initial contact force at 2175 PSI/150 bar will be 5353 lbs (2381 daN).

Additional Mount Styles Available for the HP2400:



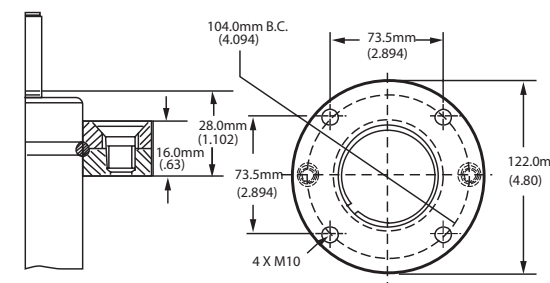
S16

To order: Specify "S16"



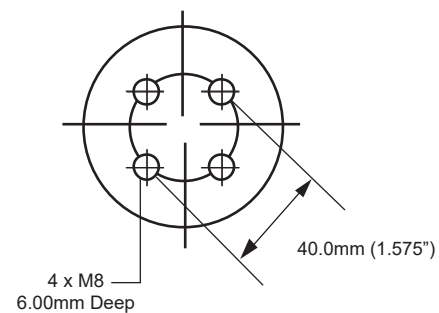
S22

To order: Specify "S22"



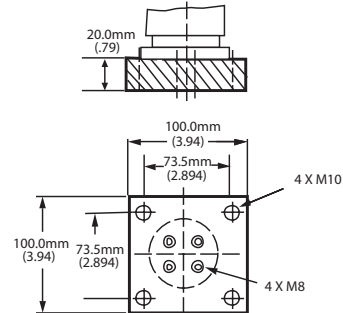
TAPPED BASE MOUNT STYLE

Specify "MTB2" when ordering



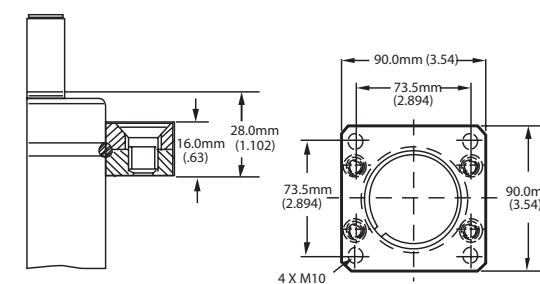
S33

To order: Specify "S33"



S78

To order: Specify "S78"



HP2400 SERIES

STANFAST INDUSTRIES is pleased to introduce our High Performance HP2400 Series nitrogen gas cylinder. This ultra compact, high performance cylinder has the highest forces and shortest profile available in a 75.0mm (2.953") diameter cylinder.

We have incorporated our superior rod bearing support system in the HP2400. Our steel bearing support is a design feature we have incorporated in all of our nitrogen cylinder lines, and a feature that allows our customers to realize extended cylinder life and reduced downtime.

The HP2400 can be used in hoses applications using our Micro-Line hose and fittings only.

To adjust pressure on the HP2400, please use a CAM6R Charging Adapter and a DTM6R Discharge Tool.

We recommend that all cylinders be backed-up during operation.

HP-1

HP2400 STROKE CHART

STROKE LENGTH		MAX.ALLOW. STROKE		C		OVERALL LENGTH		WEIGHT
MM	INCHES	MM	INCHES	MM +/- .5	INS +/- .02	MM +/- .5	INS +/- .02	LBS.
16.0	0.6	14.0	0.551	58.0	2.284	77.0	3.031	3.1
19.0	0.7	17.0	0.669	61.0	2.402	83.0	3.266	3.2
25.0	1.0	23.0	0.906	67.0	2.638	95.0	3.740	3.4
32.0	1.3	30.0	1.181	74.0	2.914	109.0	4.291	3.7
38.0	1.5	36.0	1.417	80.0	3.150	121.0	4.764	3.9
50.0	2.0	48.0	1.890	92.0	3.623	145.0	5.709	4.3
63.0	2.5	61.0	2.402	105.0	4.134	171.0	6.732	4.8
75.0	3.0	73.0	2.874	117.0	4.607	195.0	7.677	5.2
80.0	3.1	78.0	3.071	122.0	4.804	205.0	8.071	5.3
100.0	3.9	98.0	3.858	142.0	5.591	245.0	9.646	6.0
125.0	4.9	123.0	4.843	167.0	6.575	295.0	11.614	6.9

Recommended tolerance on machined pocket in the die is 77.0/79.0 mm (3.03"/3.11") for maximum HP2400 performance.

SELF-CONTAINED ORDERING CODE: HP2400 x STROKE LENGTH—MOUNT STYLE—CHARGE PRESSURE

HOSED SYSTEM ORDERING CODE: PHP2400 x STROKE LENGTH—MOUNT STYLE—UNCHARGED