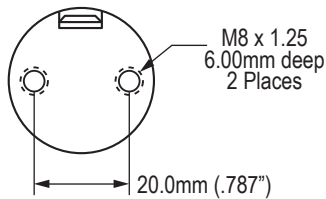
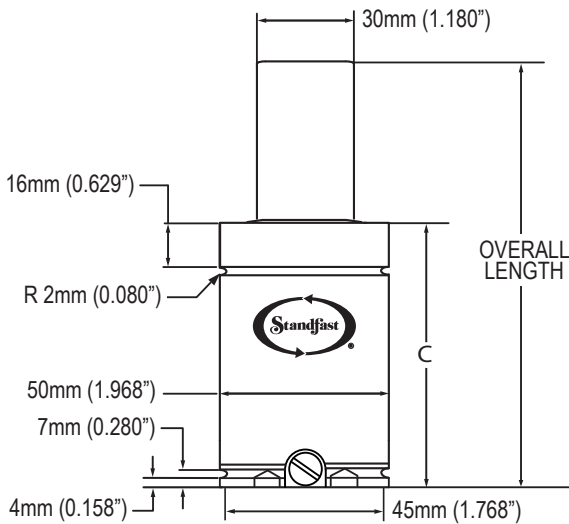


HP1200 SERIES

HP1200 TAPPED BASE STYLE

Specify "TB" when ordering



Our HP1200 offers greater force in a smaller envelope than previous 50mm (1.968") cylinders yet still contains the steel rod bearing support that is available in all of our cylinders.

Our HP1200 can be used in hoses applications using our Mirco-Line hose and fittings only.

To adjust pressure on HP1200 cylinders, please use a CAM6R Charging Adapter and a DTM6R Discharge Tool.

We recommend that all cylinders be backed-up during operation.

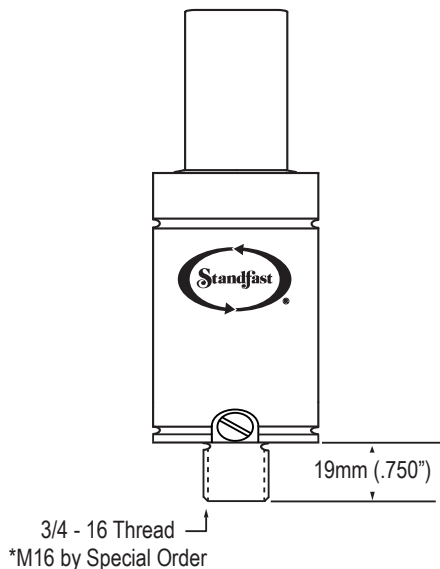
HP1200 STROKE CHART

| STROKE LENGTH | | MAX.ALLOW. STROKE | | C | | OVERALL LENGTH | | WEIGHT |
|---------------|--------|-------------------|--------|-----------|-------------|----------------|-------------|--------|
| MM | INCHES | MM | INCHES | MM +/- .5 | INS +/- .02 | MM +/- .5 | INS +/- .02 | LBS. |
| 10.0 | 0.394 | 8.5 | 0.334 | 46.5 | 1.830 | 58.0 | 2.283 | 1.25 |
| 13.0 | 0.492 | 11.0 | 0.432 | 49.0 | 1.928 | 63.0 | 2.480 | 1.28 |
| 15.0 | 0.591 | 13.5 | 0.531 | 51.5 | 2.027 | 68.0 | 2.677 | 1.31 |
| 19.0 | 0.748 | 17.5 | 0.688 | 55.5 | 2.184 | 76.0 | 2.992 | 1.36 |
| 25.0 | 0.984 | 23.5 | 0.924 | 61.5 | 2.420 | 88.0 | 3.465 | 1.43 |
| 32.0 | 1.260 | 30.5 | 1.200 | 68.5 | 2.696 | 102.0 | 4.016 | 1.51 |
| 38.0 | 1.476 | 36.0 | 1.416 | 74.0 | 2.912 | 113.0 | 4.449 | 1.58 |
| 50.0 | 1.969 | 48.5 | 1.909 | 86.5 | 3.405 | 138.0 | 5.433 | 1.73 |
| 63.0 | 2.461 | 61.0 | 2.401 | 99.0 | 3.897 | 163.0 | 6.417 | 1.88 |
| 75.0 | 2.953 | 73.5 | 2.893 | 111.5 | 4.389 | 188.0 | 7.402 | 1.93 |
| 80.0 | 3.150 | 78.5 | 3.090 | 116.5 | 4.586 | 198.0 | 7.795 | 1.99 |
| 100.0 | 3.937 | 98.5 | 3.877 | 136.5 | 5.373 | 238.0 | 9.370 | 2.23 |
| 125.0 | 4.921 | 123.5 | 4.861 | 161.5 | 6.357 | 288.0 | 11.339 | 2.38 |

Recommended tolerance on machined pocket in the die is 52.0/54.0mm (2.047"/2.125") for maximum HP1200 performance.

HP1200 STUD MOUNT STYLE

Specify "STUD" when ordering



ORDERING CODE: HP1200 X STROKE LENGTH - MOUNT STYLE - CHARGE PRESSURE

HP1200 SERIES MOUNT STYLES

HP1200 FORCE CHART based on 2,175 PSI

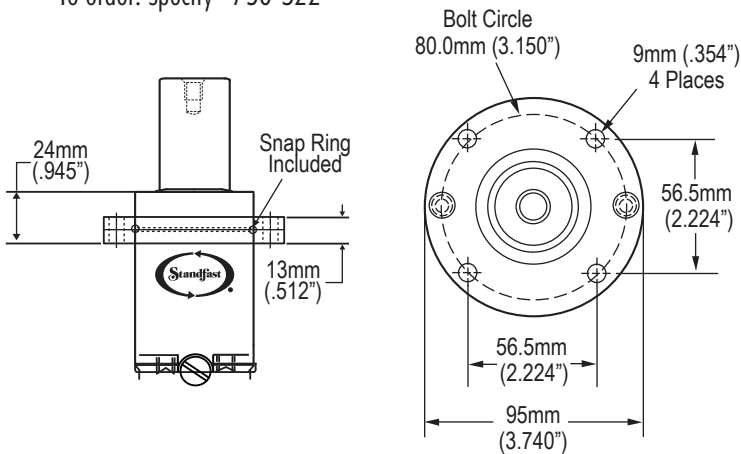
| Stroke | | Initial Contact Force | | Force at Full Stroke | |
|--------|-------|-----------------------|------|----------------------|------|
| MM | INS. | LBS | DaN | LBS | DaN |
| 10.0 | 0.394 | 2379 | 1058 | 3825 | 1702 |
| 13.0 | 0.492 | | | 3902 | 1736 |
| 15.0 | 0.591 | | | 3958 | 1761 |
| 19.0 | 0.748 | | | 4022 | 1789 |
| 25.0 | 0.984 | | | 4084 | 1817 |
| 32.0 | 1.260 | | | 4129 | 1837 |
| 38.0 | 1.476 | | | 4154 | 1848 |
| 50.0 | 1.969 | | | 4192 | 1865 |
| 63.0 | 2.461 | | | 4215 | 1875 |
| 75.0 | 2.953 | | | 4231 | 1882 |
| 80.0 | 3.150 | | | 4236 | 1884 |
| 100.0 | 3.937 | | | 4251 | 1891 |
| 125.0 | 4.921 | | | 4263 | 1896 |

Formula to calculate charge pressure for ANY contact pressure is: FORCE REQUIRED X 0.914 = PSI

Note: English dimensions in black / Metric dimensions in blue

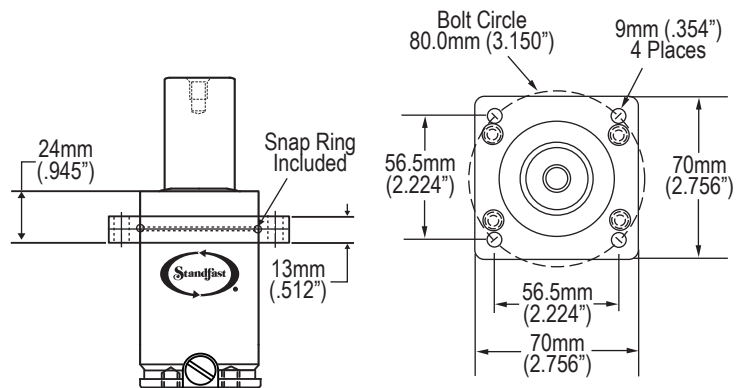
TOP ROUND FLANGE

To order: specify "750-S22"



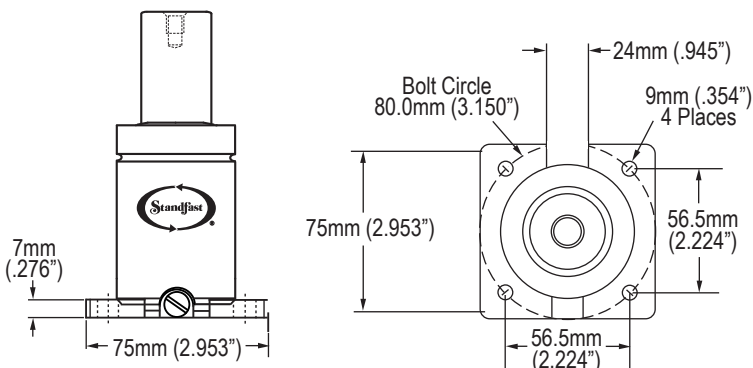
TOP SQUARED FLANGE

To order: specify "750-S78"



HP1200 SQUARED BOTTOM FLANGE

To order: specify "HP1200SB"



MOUNTING PLATE

To order: specify "750-S33"

